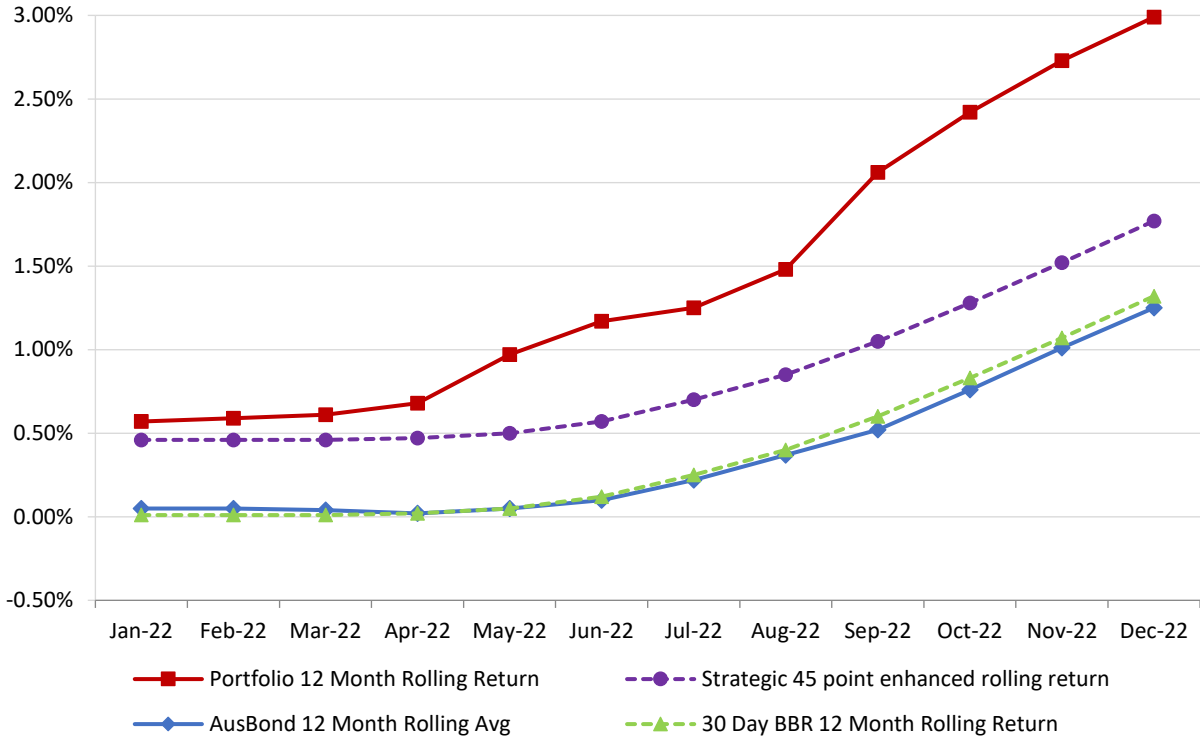


Attachment B

**Investment Performance
as at 31 December 2022**

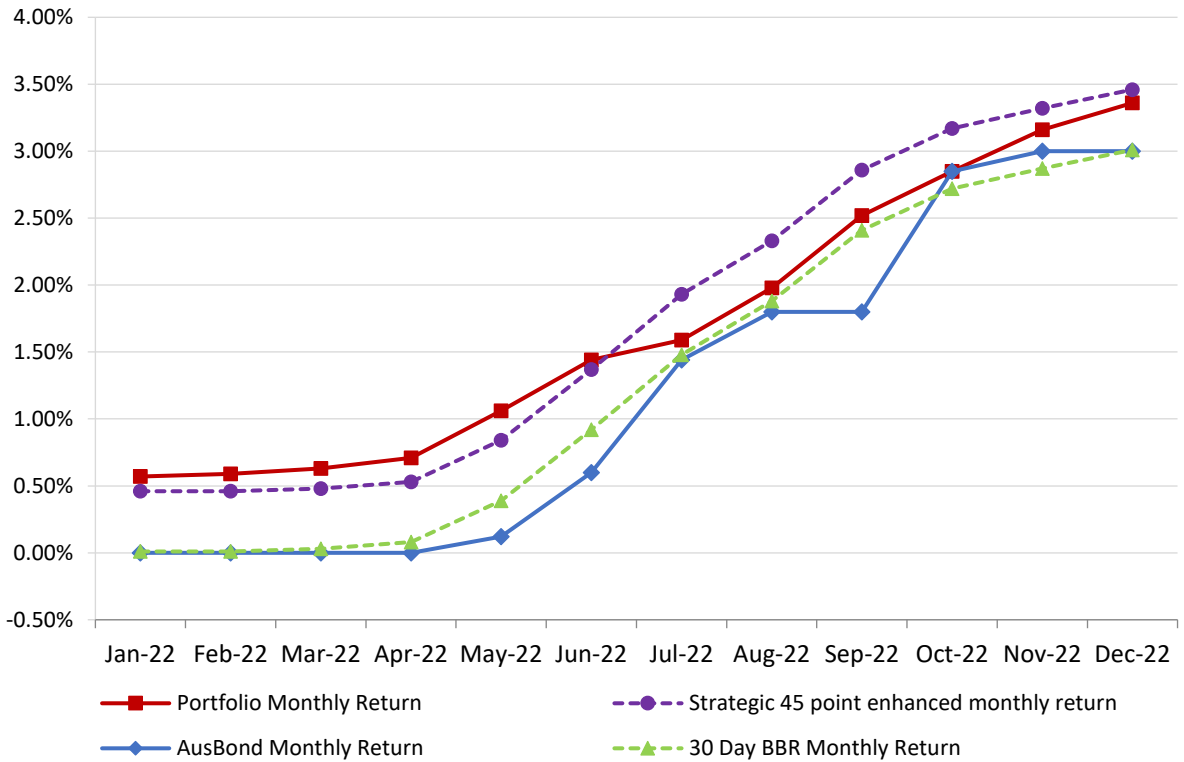
12 Month Rolling Averages

**Actual Portfolio vs Strategic Enhanced Benchmark vs AusBond Benchmark vs 30 Day BBR Benchmark
December 2022**

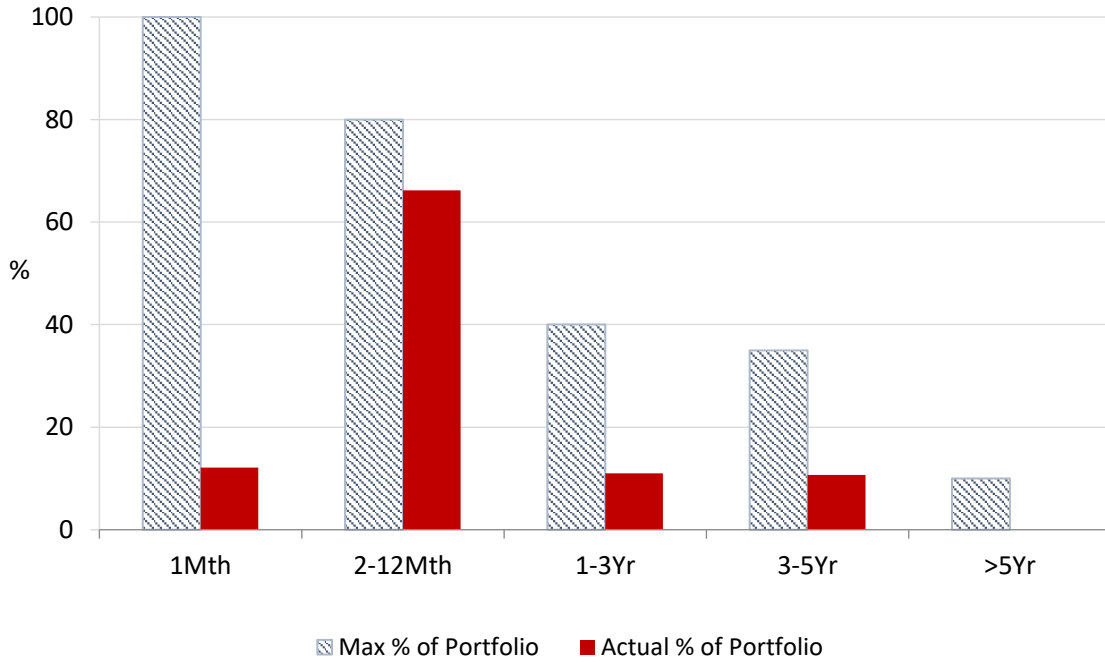


Monthly Results

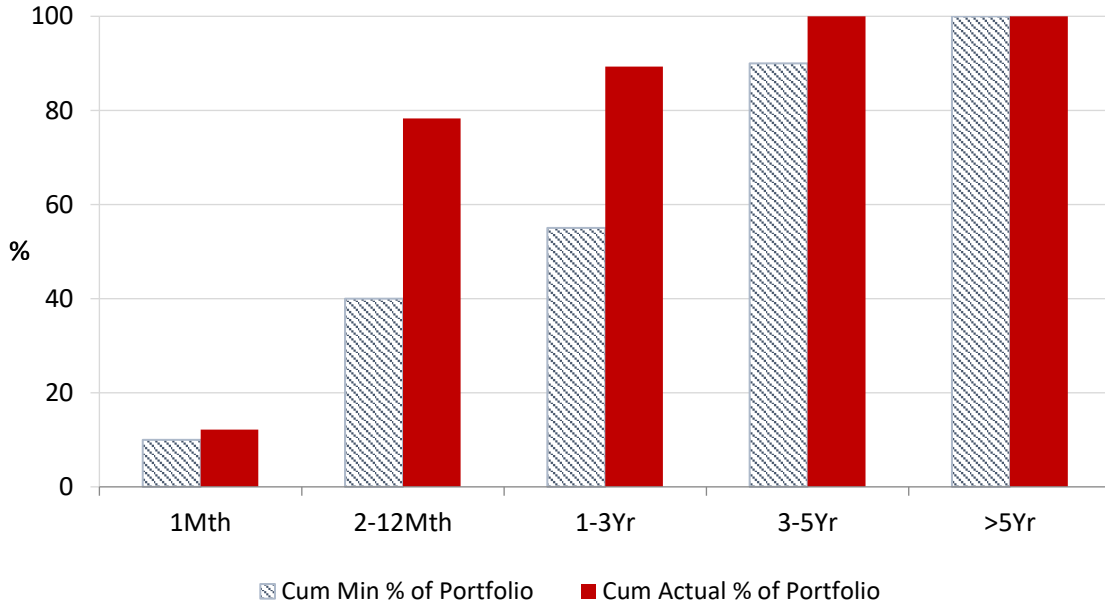
**Actual Portfolio vs Strategic Enhanced Benchmark vs AusBond Benchmark vs 30 Day BBR Benchmark
December 2022**



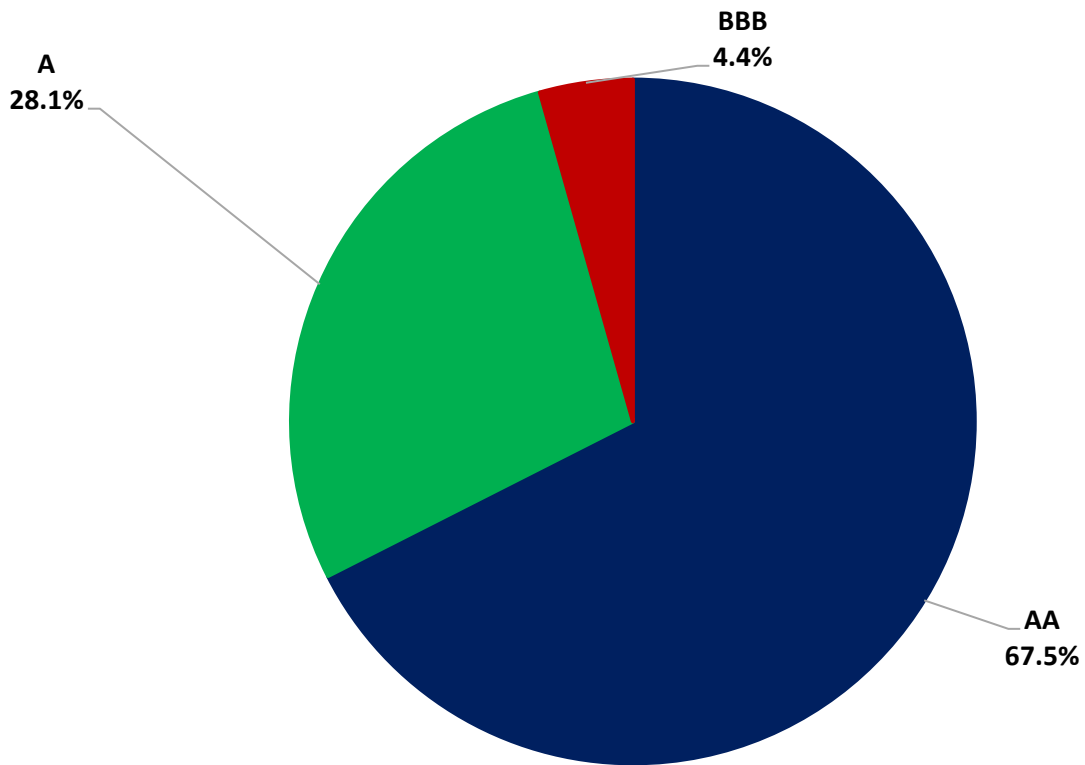
Portfolio Liquidity - Maximum Allowances as at 31 December 2022



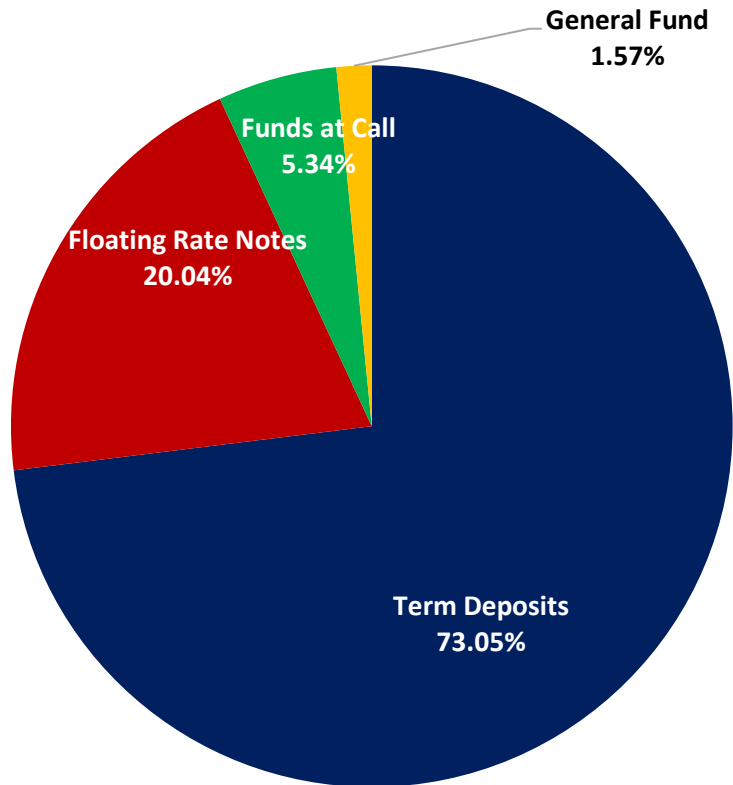
Portfolio Liquidity - Minimum Allocations as at 31 December 2022



Risk Profile as at 31 December 2022



Risk Profile as at 31 December 2022

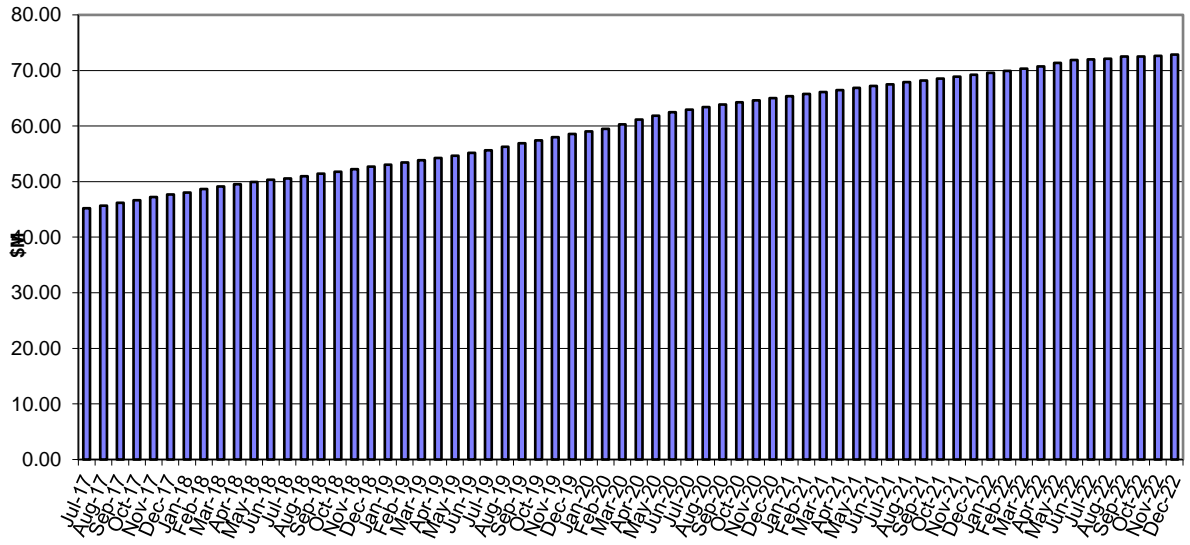


INVESTMENT AND CASH DISTRIBUTION BY FINANCIAL INSTITUTION

as at 31 December 2022

Institution Category	Financial Institution	Amount \$M	Financial Inst. %	Institution Cat. %
Australian Big 4 Bank (and related institutions)	ANZ Bank	57.0	7.6	
	Commonwealth Bank	202.4	27.1	
	National Aust Bank	53.9	7.2	
	Westpac Banking Corporation	197.0	26.3	
Big 4 Total		510.3		68.2
Other Australian ADIs and Australian subsidiaries of foreign institutions	Bank Australia Limited	10.0	1.3	
	Bank of Queensland	57.0	7.6	
	Bendigo & Adelaide Bank	40.0	5.3	
	Great Southern Bank (formerly Credit Union Australia)	2.8	0.4	
	ING Bank	40.0	5.3	
	Suncorp Bank	53.6	7.2	
	Macquarie Bank Ltd	17.0	2.3	
	Northern Territory Treasury Corporation	10.0	1.3	
Newcastle Permanent Building Society	7.3	1.0		
Other ADI Total		237.6		31.8
Grand Total		748.0	100.0	100.0

Cumulative Outperformance over AusBond Benchmark - 2016-2022



Cumulative Outperformance over 30 Day BBR Benchmark - 2016-2022

